



**India Meteorological Department  
(Ministry of Earth Sciences)**

**NATIONAL BULLETIN NO. 6 (LAND/02/2024)**

**TIME OF ISSUE: 0900 HOURS IST**

**DATED:26.08.2024**

**FROM: INDIA METEOROLOGICAL DEPARTMENT (FAX NO. 24643965/24699216/24623220)**

**TO: CONTROL ROOM, NDM, MINISTRY OF HOME AFFAIRS (FAX.NO. 23093750)**

**CONTROL ROOM NDMA (FAX.NO. 26701729)**

**CABINET SECRETARIAT (FAX.NO.23012284, 23018638)**

**PS TO HON'BLE MINISTER FOR S & T AND EARTH SCIENCES (FAX NO.23316745)**

**SECRETARY, MOES (FAX NO. 24629777)**

**H.Q. (INTEGRATED DEFENCE STAFF AND CDS) (FAX NO. 23005137/23005147)**

**DIRECTOR GENERAL, DOORDARSHAN (23385843)**

**DIRECTOR GENERAL, AIR (23421105, 23421219)**

**PIB MOES (FAX NO. 23389042)**

**UNI (FAX NO. 23355841)**

**D.G. NATIONAL DISASTER RESPONSE FORCE (NDRF) (FAX NO. 26105912, 2436 3260)**

**DIRECTOR, PUNCTUALITY, INDIAN RAILWAYS (FAX NO. 23388503)**

**CHIEF SECRETARY, ODISHA (FAX NO. 0674-2536660)**

**CHIEF SECRETARY, WEST BENGAL (FAX NO. 033-22144328)**

**CHIEF SECRETARY, JHARKHAND (FAX NO. 0651-2400255)**

**CHIEF SECRETARY, MADHYA PRADESH (FAX NO. 0755-2441076)**

**CHIEF SECRETARY, RAJASHTHAN (FAX NO. 0141-2227114)**

**CHIEF SECRETARY, MAHARASHTRA (FAX NO. 022- 22028594)**

**CHIEF SECRETARY, GUJARAT (FAX NO. 079-23250305)**

**CHIEF SECRETARY, DAMAN & DIU (FAX NO. 0260-2230775)**

**CHIEF SECRETARY, DADRA & NAGAR HAVELI (FAX NO. 0260-2645466)**

**CHIEF SECRETARY, GOA (FAX NO. 0832-2415201)**

**Sub: (a) Deep Depression over East Rajasthan and adjoining West Madhya Pradesh.**

The deep depression over East Rajasthan and adjoining west Madhya Pradesh moved west-southwestwards with a speed of 8 kmph during past 6 hours and lay centered at 0530 hours IST of today, the 26<sup>th</sup> August over the same region near latitude 24.2°N and longitude 74.2°E, about 60 km southeast of Udaipur (East Rajasthan), 200 km east of Deesa (Gujarat) and 200 km north-northeast of Ahmedabad (Gujarat).

It is likely to continue to move west-southwestwards across south Rajasthan and Gujarat region and reach Saurashtra & Kutch and adjoining areas of Pakistan and northeast Arabian Sea by morning of 29<sup>th</sup> August.

**(b) Well Marked Low Pressure Area over Gangetic West Bengal**

The low pressure area over Bangladesh and adjoining Gangetic West Bengal moved nearly westward and became a Well Marked Low Pressure Area over Gangetic West Bengal at 0530 hours IST of today, the 26<sup>th</sup> August 2024. It is likely to move west-northwestwards across Gangetic West Bengal, Jharkhand and adjoining north Odisha during next 2 days.

## **Warnings:**

### **(i) Rainfall Warning:**

**East & West Madhya Pradesh:** Light to moderate rainfall at most places with heavy to very heavy rainfall at a few places very likely on 26<sup>th</sup> August.

**East & West Rajasthan:** Light to moderate rainfall at most places with heavy to very heavy rainfall at a few places and extremely heavy rainfall at isolated places is likely on 26<sup>th</sup> August. Light to moderate rainfall at most places with heavy to very heavy rainfall at isolated places is likely on 27<sup>th</sup> August.

**Gujarat region:** Light to moderate rainfall at most places with heavy to very heavy rainfall at a few places and isolated extremely heavy rainfall likely on 26<sup>th</sup> and 27<sup>th</sup> August and heavy rainfall at isolated places on 28<sup>th</sup> August.

**Saurashtra & Kutch:** Light to moderate rainfall at most places with heavy to very heavy rainfall at a few places and extremely heavy rainfall at isolated places is likely on 26<sup>th</sup> and 27<sup>th</sup> August and heavy to very heavy rainfall at isolated places is likely on 28<sup>th</sup> August.

**Konkan & Goa:** Light to moderate rainfall at most places with heavy to very heavy rainfall at a few places is likely on 26<sup>th</sup> and heavy rainfall on 27<sup>th</sup> & 28<sup>th</sup> August.

**Madhya Maharashtra:** Light to moderate rainfall at most places with heavy to very heavy rainfall at a few places is likely on 26<sup>th</sup> and heavy rainfall at isolated places is likely on 27<sup>th</sup> & 28<sup>th</sup> August.

**Odisha:** Light to moderate rainfall at most places with heavy to very heavy rainfall at isolated places is likely on 26<sup>th</sup> August and heavy rainfall at isolated places is likely on 27<sup>th</sup> & 28<sup>th</sup> August.

**Gangetic West Bengal:** Light to moderate rainfall at most places with heavy to very heavy rainfall at isolated places is likely on 26<sup>th</sup> August and heavy rainfall at isolated places is likely on 27<sup>th</sup> August.

**Jharkhand:** Light to moderate rainfall at many places with heavy to very heavy rainfall at isolated places is likely on 26<sup>th</sup> & 27<sup>th</sup> August and heavy rainfall at isolated places is likely on 28<sup>th</sup> August.

### **(ii) Wind warning:**

- Strong surface wind speed reaching 30-40 kmph gusting to 50 kmph is very likely to prevail over Madhya Pradesh on 26<sup>th</sup> August.
- Strong surface wind speed reaching 40-50 kmph gusting to 60 kmph is very likely to prevail over South Rajasthan on 26<sup>th</sup> and 27<sup>th</sup> August.
- Strong surface wind speed reaching 40-50 kmph gusting to 60 kmph is very likely over Gujarat state, along and off Gujarat & adjoining Pakistan and north Maharashtra coasts and northeast Arabian Sea during 26<sup>th</sup> - 28<sup>th</sup> August.
- Squally wind speed reaching 55-65 kmph gusting to 75 kmph is likely to prevail along & off Gujarat & adjoining Pakistan coasts and northeast and adjoining eastcentral Arabian Sea

on 29<sup>th</sup> August. Squally wind speed reaching 40-50 kmph gusting to 60 kmph would prevail over interior districts of Gujarat state on 29<sup>th</sup> August.

- Squally wind speed reaching 40-50 kmph gusting to 60 kmph is likely to prevail along and off north Maharashtra coasts on 28<sup>th</sup> & 29<sup>th</sup> August.

**(iii) Sea condition:**

- Squally weather with Rough to very Rough sea conditions is very likely to prevail along & off Gujarat & adjoining Pakistan and north Maharashtra Coasts and Northeast & adjoining Eastcentral Arabian Sea till 30<sup>th</sup> August.
- Squally weather with Rough Sea condition is very likely to prevail over North Bay of Bengal and along & off North Odisha, West Bengal, Bangladesh coasts on 26<sup>th</sup> August.

**(iv) Fisherman warning:**

- Fishermen are advised not venture into Northeast & adjoining Eastcentral Arabian Sea and along & off Gujarat & adjoining Pakistan and north Maharashtra Coasts till 30<sup>th</sup> August.
- Fishermen are advised not to venture into North Bay of Bengal and along & off North Odisha, West Bengal, Bangladesh coasts on 26<sup>th</sup> August.

**(v) Advisory for offshore/onshore Exploration and Production (E & P) Operators:**

The small ships and offshore -onshore E & P operators, shipping and port authorities along & off Gujarat & north Maharashtra Coasts and Northeast & adjoining Eastcentral Arabian Sea are advised to keep watch on developing weather and take necessary actions.

**(vi) Impact Expected**

- Localized Flooding of roads, water logging in low lying areas and closure of underpasses mainly in urban areas of the above region.
- Occasional reduction in visibility due to heavy rainfall.
- Reduction of visibility over sea area due to sea spray induced by strong wind and heavy rainfall.
- Disruption of traffic in major cities due to water logging in roads leading to increased travel time.
- Minor damage to kutcha roads.
- Possibilities of damage to vulnerable structure.
- Localized Landslides/Mudslides/landslips/mud slips/land sinks/mud sinks.
- Damage to horticulture and standing crops in some areas due to inundation.
- It may lead to riverine flooding in some river catchments (for riverine flooding please visit Web page of CWC)

**(v) Action Suggested**

- Fishermen are advised not to venture into Northeast & adjoining Eastcentral Arabian Sea and along & off Gujarat & adjoining Pakistan and north Maharashtra Coasts till 30<sup>th</sup> August.
- Fishermen are advised not to venture into North Bay of Bengal and along & off North Odisha, West Bengal, Bangladesh coasts on 26<sup>th</sup> August.
- Judicious regulation of offshore/onshore Operations

- Judicious regulation of surface transports including railways and roadways.
- Check for traffic congestion on your route before leaving for your destination.
- Follow any traffic advisories that are issued in this regard.
- Avoid going to areas that face the water logging problems often.
- Avoid staying in vulnerable structure.

**(vi) Agromet advisories for Heavy** Rainfall likely over various Madhya Pradesh, South Rajasthan, Gujarat State and North Maharashtra

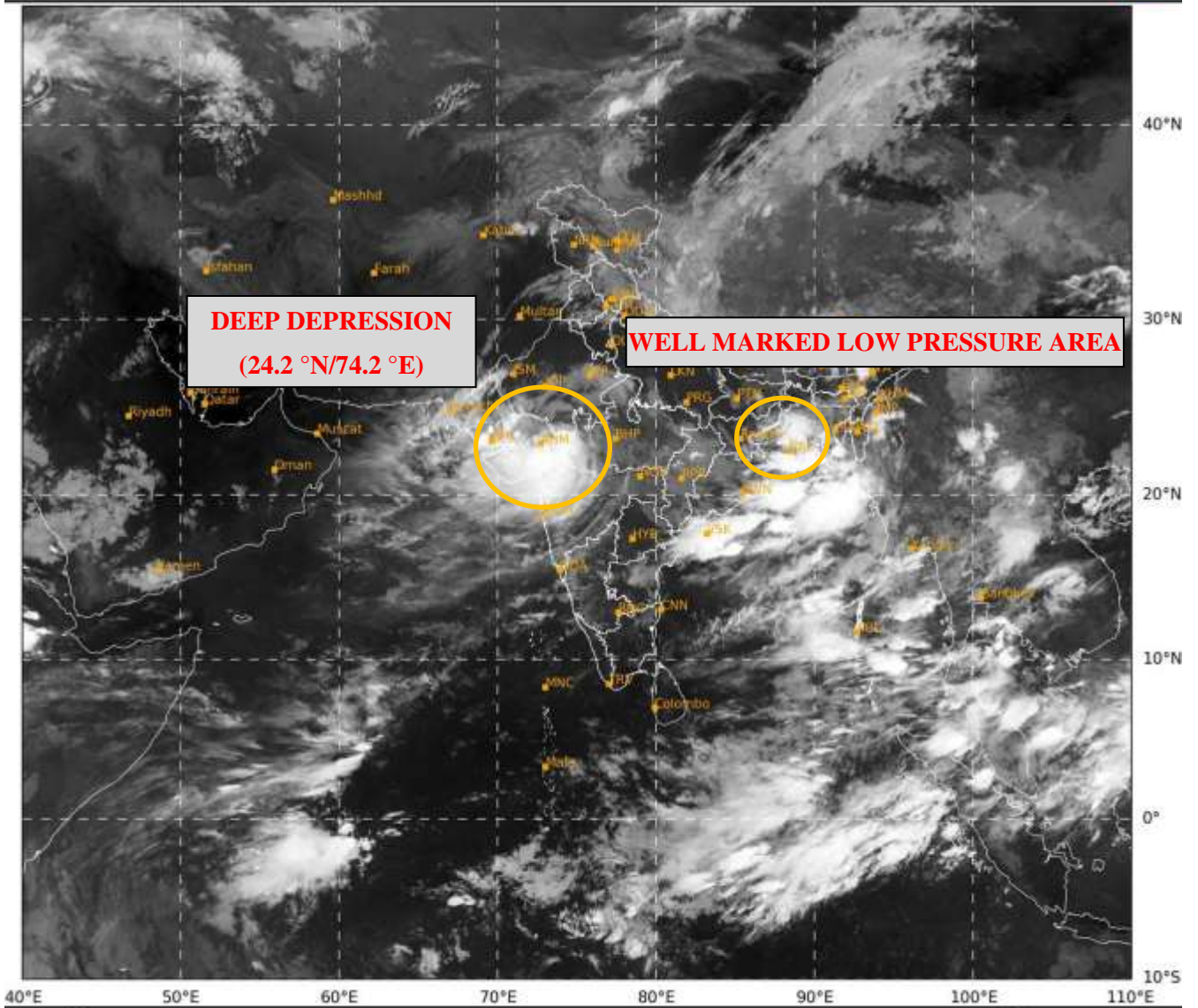
- Make provision for draining out excess water from crop fields to avoid water stagnation in Madhya Pradesh, South Rajasthan, Gujarat State and North Maharashtra.
- Provide mechanical support to horticultural crops and staking to vegetables.

Realised rainfall (in cm) during 0830 hrs IST of yesterday - 0530 hrs IST of today is placed at Annexure-1.

**Next bulletin will be issued at 1130 hours IST of today, the 26<sup>th</sup> August, 2024.**

**(Dr. Ananda Kumar Das)**  
**Scientist F, Cyclone Warning, New Delhi**

*Copy to: ACWC Kolkata/ACWC Mumbai/RMC Mumbai/CWC Ahmedabad/MC Jaipur/RMC, Nagpur/MC, Bhopal//CWC Bhubaneswar/MC, Goa/MC, Ranchi*



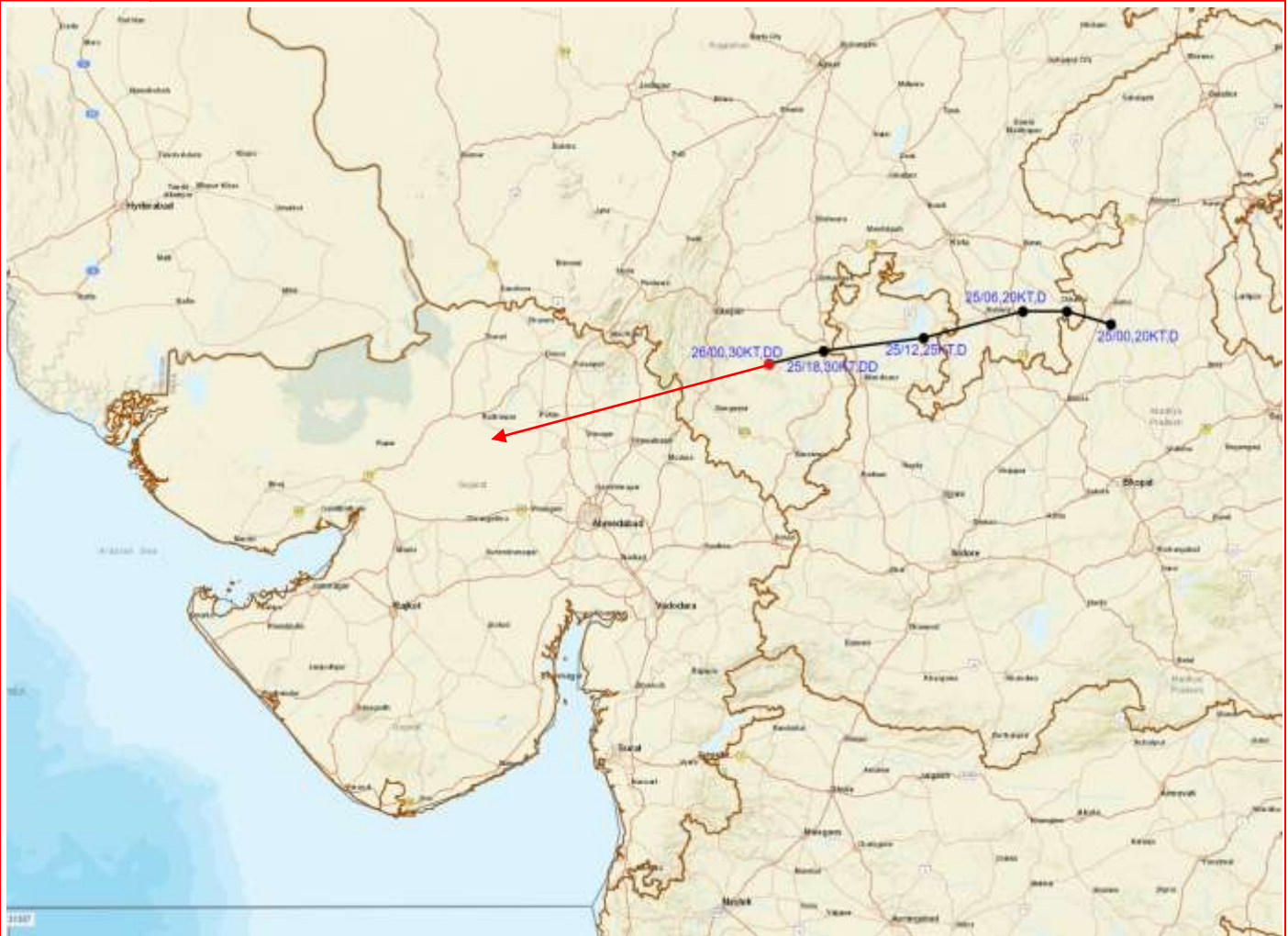
496

936







IMD, DELHI



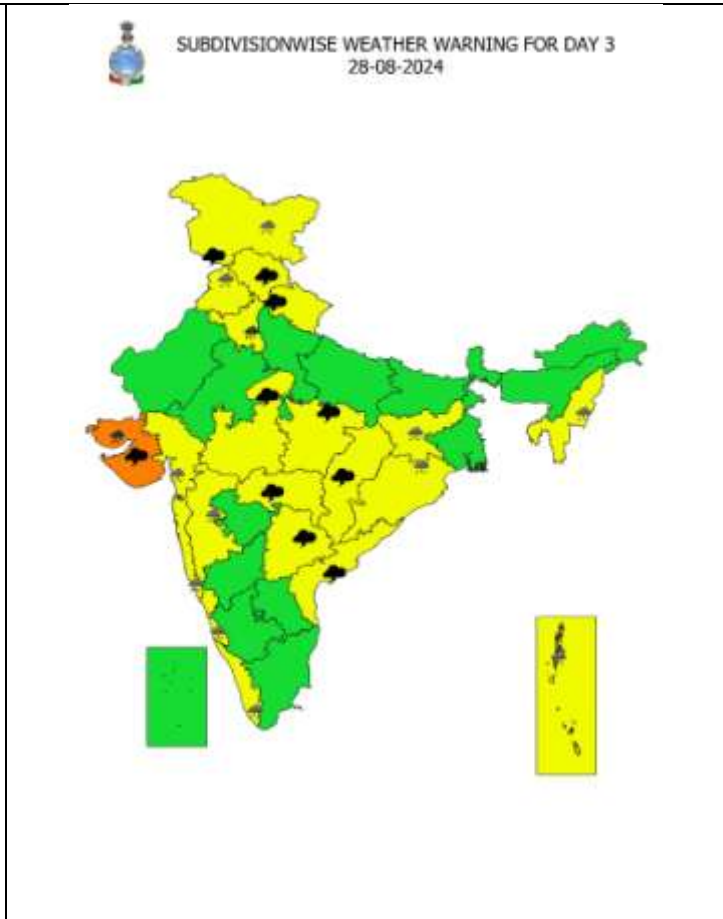
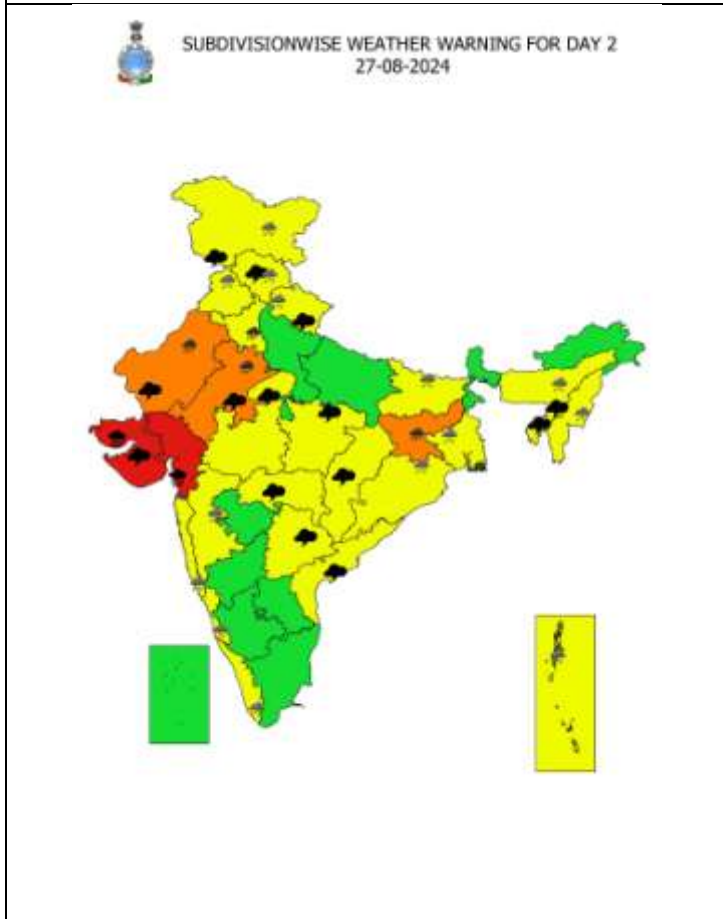
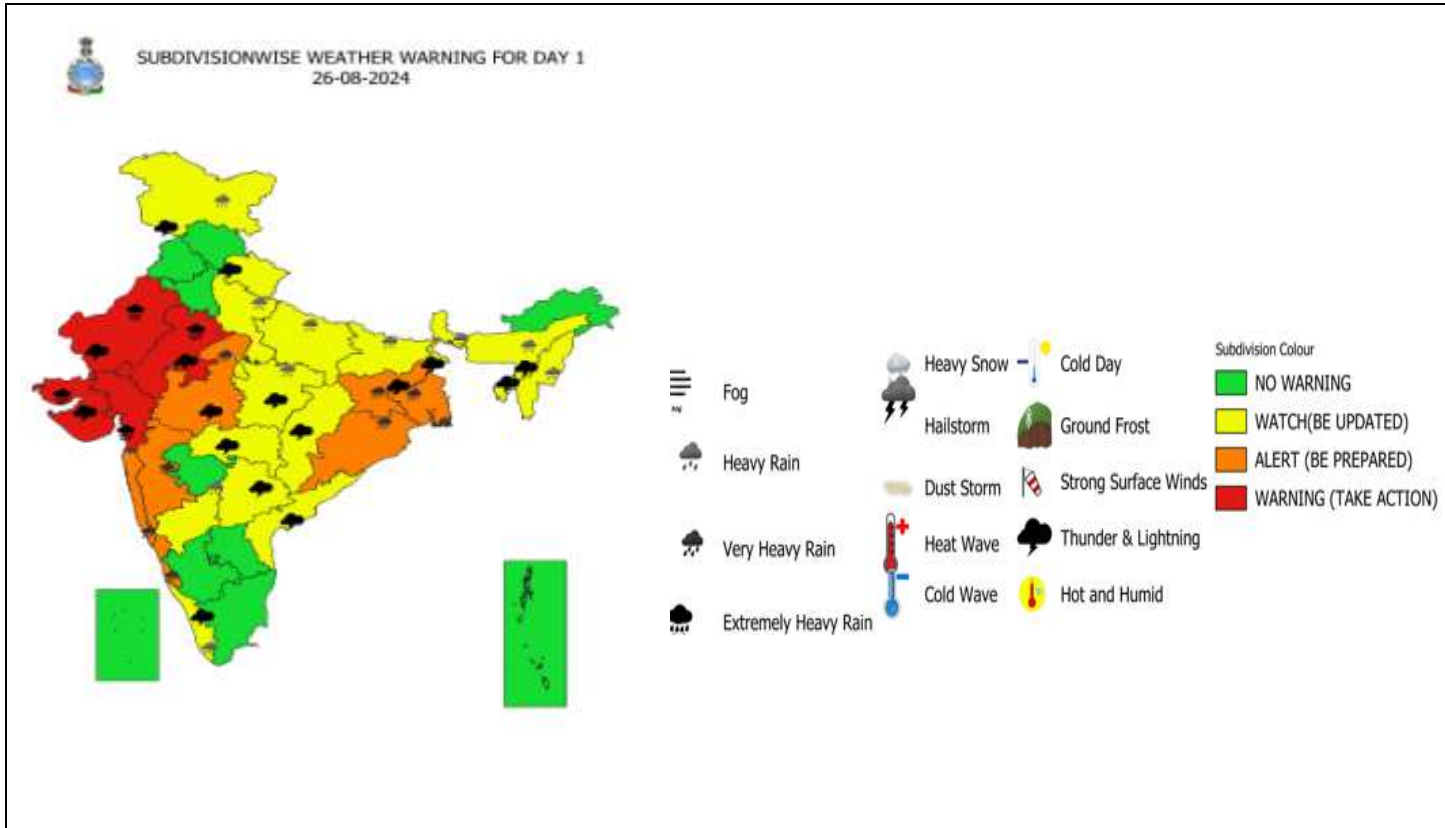
**OBSERVED AND FORECAST TRACK OF DEEP DEPRESSION OVER EAST RAJASTHAN AND ADJOINING WEST MADHYA PRADESH BASED ON 0000 UTC (0530 IST) OF 26<sup>TH</sup> AUGUST, 2024.**

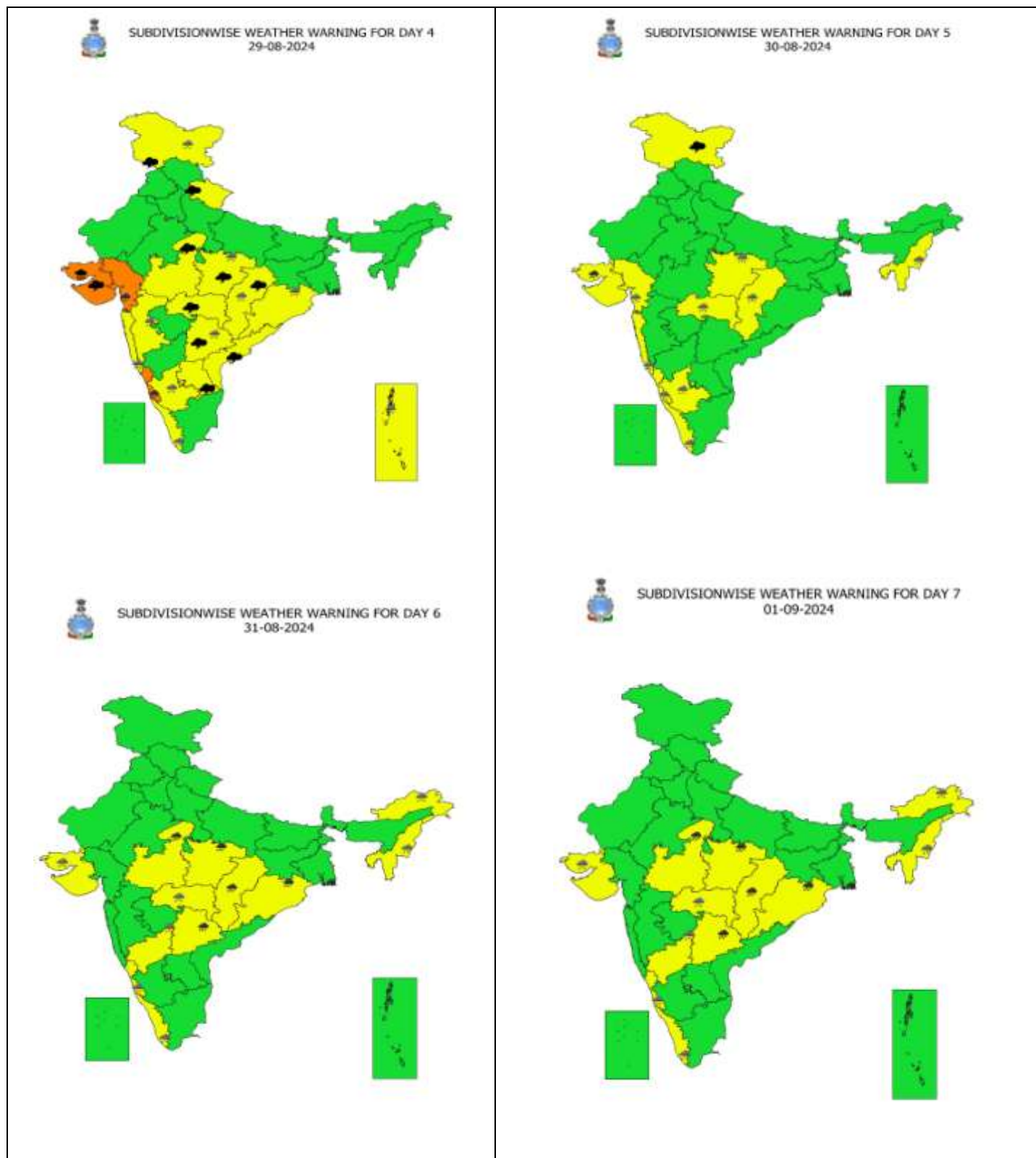


DATE/TIME IN UTC  
IST=UTC + 0530  
L: LOW PRESSURE AREA  
WML: WELL MARKED LOW PRESSURE AREA  
D: DEPRESSION (17-27 KT)  
DD: DEEP DEPRESSION (28-33 KT)  
CS: CYCLONIC STORM (34-47 KT)  
SCS: SEVERE CYCLONIC STORM (48-63KT)  
VSCS: VERY SEVERE CYCLONIC STORM (64-89 KT)  
ESCS: EXTREMELY SEVERE CYCLONIC STORM (90-119 KT)  
SuCS: SUPER CYCLONIC STORM ( $\geq$  120 KT)

-  LESS THAN 34 KT
-  34-47 KT
-   $\geq$  48 KT
-  OBSERVED TRACK
-  FORECAST TRACK
-  CONE OF UNCERTAINTY

# Weather Warning Graphics

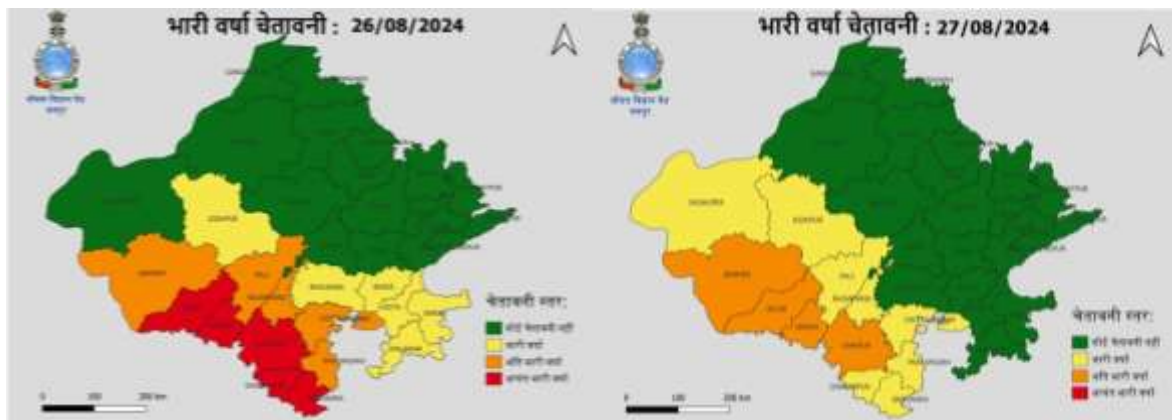
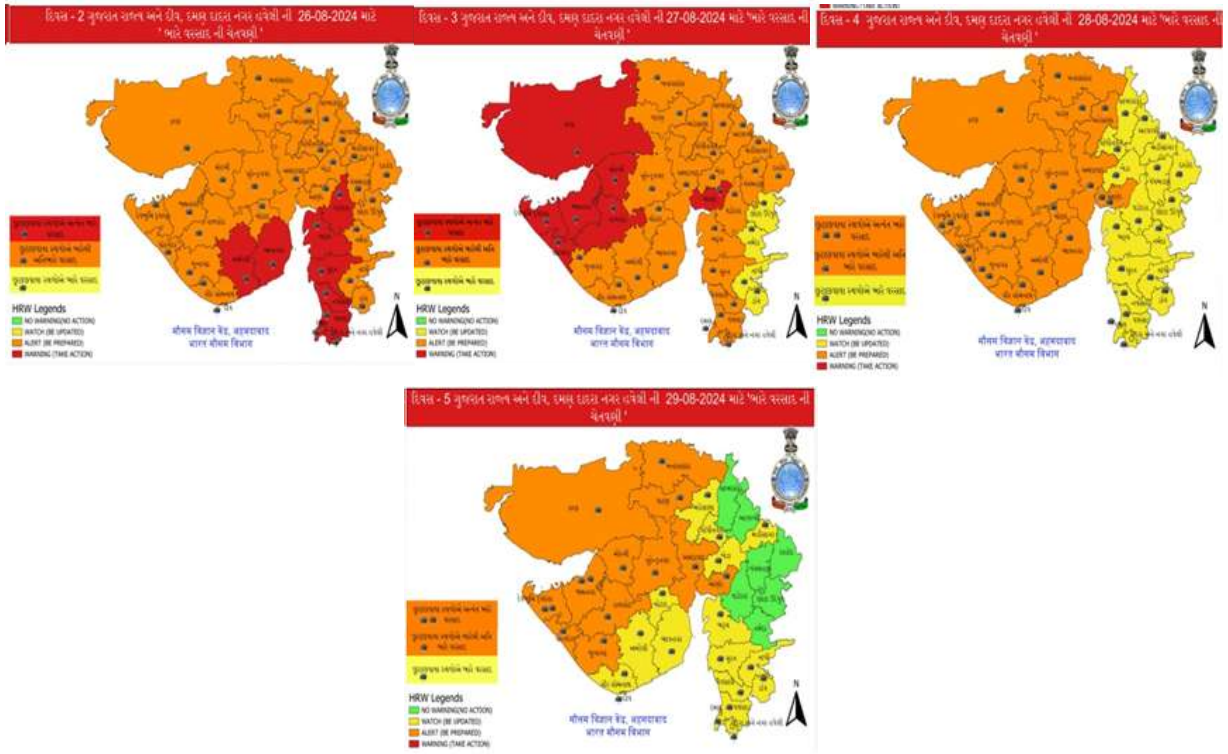




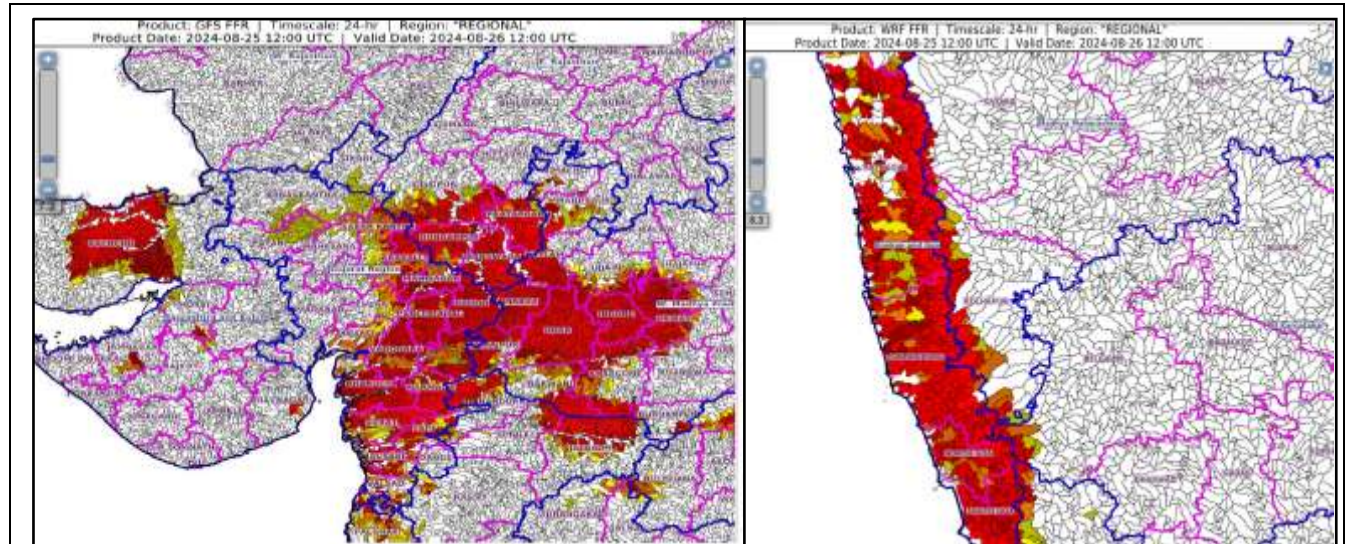
- Action may be taken based on **ORANGE AND RED** COLOUR warnings.
- Vulnerable regions likely urban and hilly areas action may be initiated for heavy rainfall warning.
- As the lead period increases forecast accuracy decreases.






# District-wise Warning Graphics



## Flash Flood Guidance



### Flash Flood Risk

	<b>High Risk (Take Action)</b>
	<b>Moderate Risk (Be Prepared)</b>
	<b>Low Risk (Be Updated)</b>

### 24 hours Outlook for the Flash Flood Risk (FFR) till 1730 IST of 26-08-2024 :

**Moderate to High flash flood risk** likely over few watersheds & neighbourhoods of following Met Sub-divisions during next 24 hours.

**East Rajasthan** - Banswara, Chittaurgarh, Dungarpur, Pratapgarh, Sirohi and Udaipur districts.

**West Madhya Pradesh** - Alirajpur, Barwani, Dewas, Dhar, Indore, Jhabua, Khargone, Mandsaur, Ratlam, Shajapur and Ujjain districts.

**Gujarat Region** - Dadar & Nagar Haveli, Daman, Anand, Aravalli, Banaskantha, Bharuch, Chhota Udepur, Dangs, Gandhinagar, Khera, Mahesana, Mahisagar, Narmada, Navsari, Patan, Sabar Kantha, Surat, Tapi, Vadodara and Valsad districts.

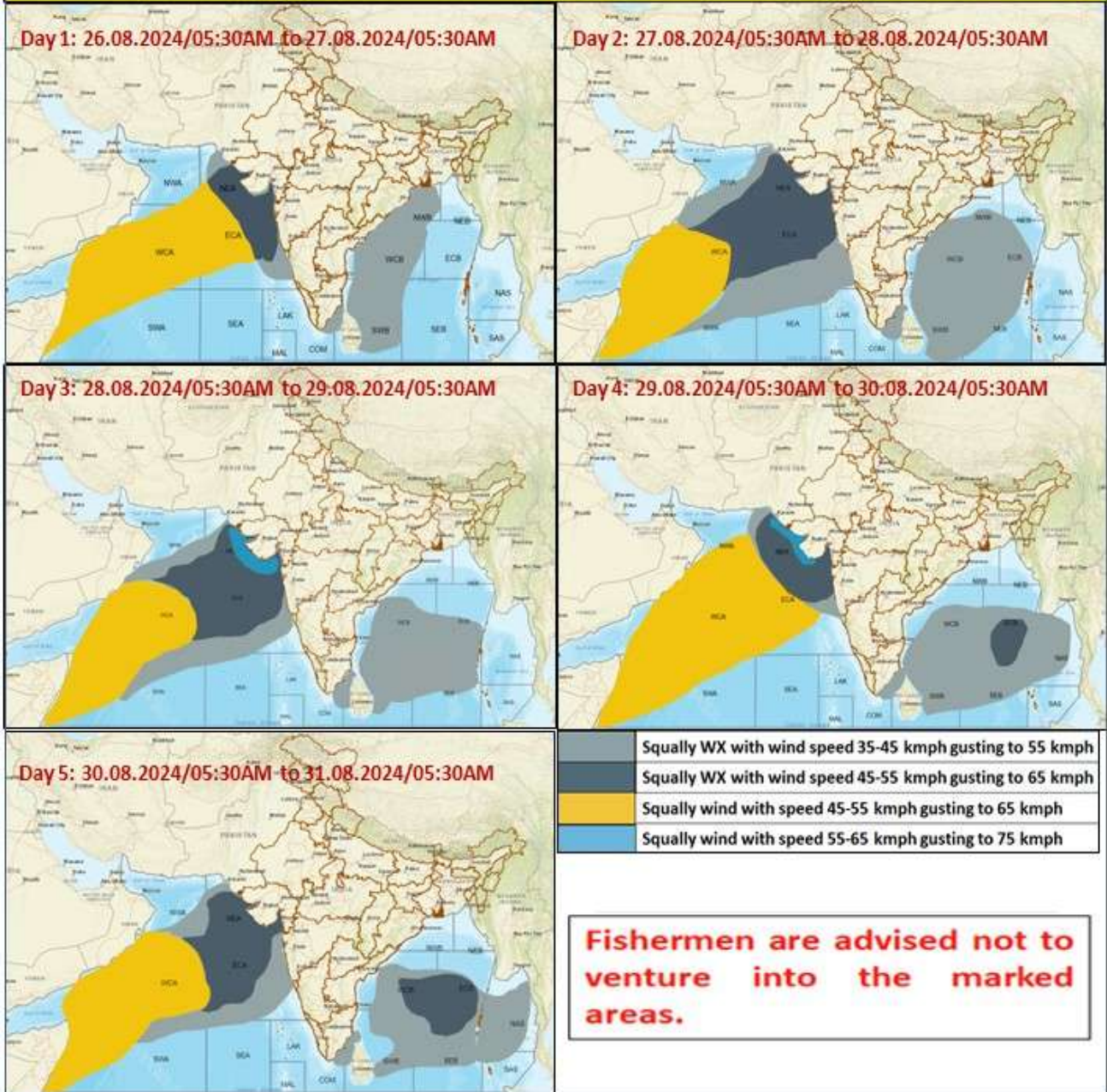
**Madhya Maharashtra** - Dhule and Jalgaon districts.

**Saurashtra & Kutch** - Bhavnagar, Jamnagar, Morbi and Kachchh districts. Surface runoff/ Inundation may occur at some fully saturated soils & low-lying areas over AoC as shown in map due to expected rainfall occurrence in next 24 hours.

**Low to Moderate flash flood risk** likely over few watersheds & neighbourhoods of following Met Sub-divisions during next 24 hours.

**Konkan & Goa** - North Goa, South Goa, Ratnagiri and Sindhudurg districts. Surface runoff/ Inundation may occur at some fully saturated soils & low-lying areas over AoC as shown in map due to expected rainfall occurrence in next 24 hours.

### Fishermen Warning Graphics



## Annexure-1

**Significant amount of Cumulative realised rainfall (in mm) during 0830 hours IST of 25<sup>th</sup> - 0530 hours IST of 26th August over Gujarat state**

District	Taluka	Rainfall amount (mm)
NAVSARI	Khergam	329
DANGS	Dang-Ahwa	254
VALSAD	Kaprada	218
DANGS	Vaghai	234
VALSAD	Dharampur	195
NARMADA	Dediapada	206
VALSAD	Valsad	167
NARMADA	Sagbara	161
DANGS	Subir	198
NAVSARI	Vansada	175
SURENDRANAGAR	Muli	206
RAJKOT	Rajkot	198
SURENDRANAGAR	Chotila	194
MAHISAGAR	Santrampur	186
TAPI	Kukarmunda	168
MORBI	Wankaner	181
PANCHMAHALS	Shehera	166
VALSAD	Pardi	130
NARMADA	Nandod	172
MORBI	Halvad	174
VALSAD	Vapi	143
DAHOD	Fatepura	147
VADODARA	Karjan	157
RAJKOT	Paddhari	149
CHHOTAUDEPUR	Kavant	147
DAHOD	Dahod	137
ARVALLI	Modasa	142
MAHISAGAR	Kadana	133
MAHISAGAR	Lunawada	111
SURENDRANAGAR	Thangadh	128
KHEDA	Mahudha	125
KHEDA	Nadiad	124
NAVSARI	Chikhli	105
NAVSARI	Gandevi	90
SURAT	Umarpada	91
TAPI	Nizar	105
SURENDRANAGAR	Wadhwan	112
VADODARA	Sinor	112
CHHOTAUDEPUR	Chhotaudepur	105
SURENDRANAGAR	Dhrangadhra	105
SURENDRANAGAR	Sayla	105
PANCHMAHALS	Morwa (Hadaf)	66
MAHISAGAR	Khanpur	102
RAJKOT	Lodhika	102
ANAND	Sojitra	99

DAHOD	Limkheda	92
ARVALLI	Bayad	99
NARMADA	Garudeshwar	95
KHEDA	Kathlal	95
VADODARA	Vadodara	95
MAHISAGAR	Virpur	90
NARMADA	Tilakwada	88
DAHOD	Jhalod	84
MAHESANA	Kadi	93
GANDHINAGAR	Dehgam	93
TAPI	Songadh	83
TAPI	Uchchhal	77
ANAND	Borsad	91
BHARUCH	Netrang	90
TAPI	Dolvan	77
SABARKANTHA	Himatnagar	86
VALSAD	Umbergaon	77
KHEDA	Kapadvanj	86
AHMEDABAD	Ahmedabad City	86
MORBI	Tankara	86
ARVALLI	Meghraj	85
ARVALLI	Malpur	83
DAHOD	Dhanpur	81
RAJKOT	Jasdan	61
MAHESANA	Vijapur	83
SURAT	Mangrol	74
MAHISAGAR	Balasinor	76
RAJKOT	Kotda Sangani	70
PANCHMAHALS	Godhra	75
SURENDRANAGAR	Chuda	77
ANAND	Anand	75
RAJKOT	Gondal	70
KHEDA	Galteshwar	73
BOTAD	Gadhada	32
KHEDA	Kheda	72